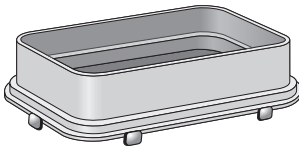


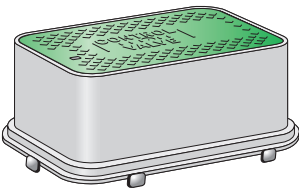


**PENTEK**  
ACCESS BOXES

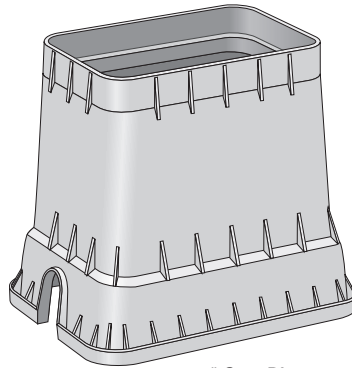
# EXTENSIONS FOR TURF BOXES



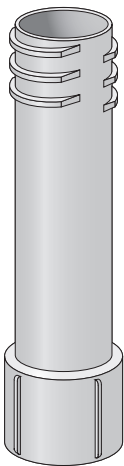
*3" Standard Extension*



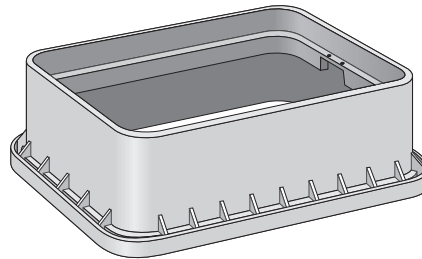
*3" Standard Extension  
(Shown with Drop-in Lid)*



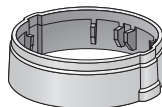
*18" One Piece*



*20" Mainline Valve  
Box Extension*



*6" Jumbo Extension*



*3" Round Extension*

- SUPERFLEXON material
  - Stronger than structural foam, greater top-load strength
  - More UV and wear resistant than structural foam
  - 10 Year Lid Guarantee
- Multiple extensions and depths available
  - Easily adapts to your requirements
  - Designed for use with many competitor boxes
- Lighter than cast iron or concrete boxes
  - Easier warehouse handling
  - Reduced injury potential
- Extensions are available in black
- 18" one-piece available in black and white

**"You're Covered!"**



**PENTEK**  
ACCESS BOXES

# EXTENSIONS FOR TURF BOXES

DESCRIPTION	PART #	DESCRIPTION	PART #
<b>EXTENSIONS</b>		<b>ACCESSORIES</b>	
<b>Standard Box</b>		Lexan Bolt-Pentagon Lock	143003
3" Black	170102	Lexan Locking Nut	143013
6" Black	170103	Hexagon Steel Bolt	143014
Black 6" Extension w/Green "Control Valve" Lid	170116	Cast Iron Flip Lid Only	172002
18" Black One-Piece w/2 Mouse Holes	194101	Plastic Flip Lid Only	172003
18" White One-Piece w/2 Mouse Holes	194102	Plastic Flip Lid, Latch and Screw	172114
<b>Jumbo Box</b>			
6" Black	190110		
6" Black w/Green "Control Valve" Lid w/Snap Lock	190115		
6" Flared Black w/ Green Lid w/Snap Lock	170130		
6" Flared Black w/ Green T-Top Lid	174519		
<b>10" Round Box</b>			
3" Black	181026		
<b>5-1/4" Adjustable Valve Box</b>			
20" Adjustable Extension	111146		

## SUPERFLEXON BOXES AND COVERS

SUPERFLEXON is a plastic material made of a rigid combination of polyolefin and fibrous inorganic components. It is chemically inert and normally unaffected by moisture, corrosion and the effects of temperature changes. SUPERFLEXON also has a high tensile strength with light weight because it is a solid (not foamed) structural material.

SUPERFLEXON covers are NOT traffic covers and should not be used in roadways, etc.



502 Indiana Avenue, Sheboygan, WI 53081, USA  
 Phone: 800.348.7558 • Fax: 888.246.0085 • International Phone: 920.451.9469  
 E-mail: support@pentekaccessboxes.com • www.pentekaccessboxes.com