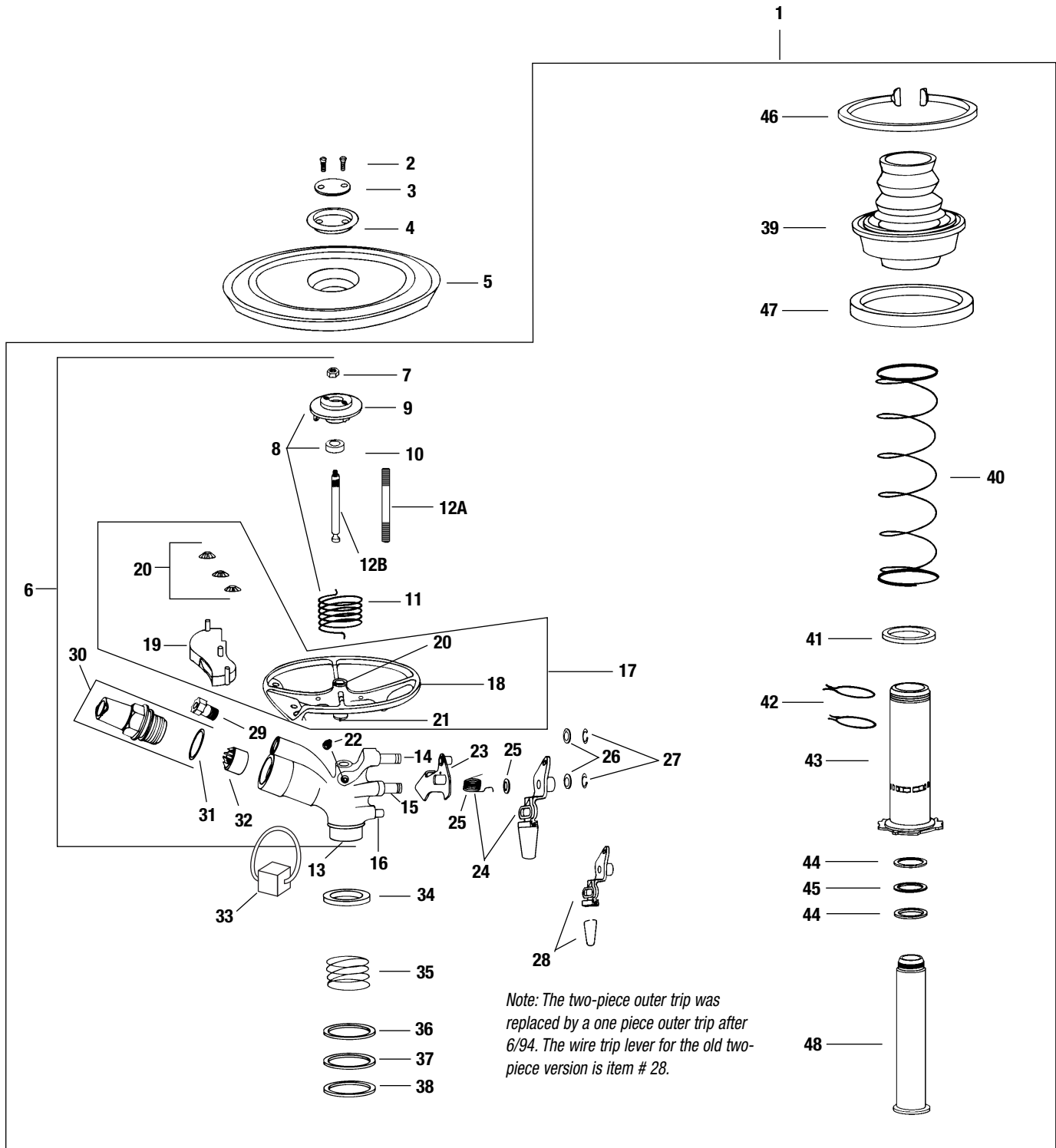


95DR / 95DS / 95DH INTERNAL ASSEMBLY



Ref.	Part Description	95DR	95DS	95DH
<b>1</b>	<b>INTERNAL ASSEMBLY</b>	208236-30--15	208236-30--15	208236-30--15
<b>COVER ASSEMBLIES</b>				
2	Cover Screws, Standard	200974	200974	200974
3	Retainer, Steel	202685	202685	202685
4	Plastic Sand Cover	204749	204749	204749
5	Plastic Cover	208625	208625	208625
<b>UPPER ASSEMBLY (New Threaded Fulcrum Pin Version)</b>				
6	Arm/Body Assy	203122-30-15	203122-30-15	203122-30-15
-	Body/Fulcrum Pin Assy	202686	202686	202686
7	Fulcrum Nut	(A) (206384)	(A) (206384)	(A) (206384)
8A	Cover Support Assy Threaded	210428	210428	210428
9	Cover Support	(210100)	(210100)	(210100)
10	Arm Hood	(204707)	(204707)	(204707)
11	Arm Spring	202699	202699	202699
12A	Fulcrum Pin-Threaded	(A) (210101)	(A) (210101)	(A) (210101)
13	Body	(201584)	(201584)	(201584)
14	Upper Trip Shaft	(206372)	(206372)	(206372)
15	Lower Trip Shaft	(200692)	(200692)	(200692)
16	Stop Pin	(202440)	(202440)	(202440)
17	Arm Assembly	203944	203944	203944
18	Arm	(207521)	(207521)	(207521)
19	PJ Tube Assembly	204723	204723	204723
20	Pushnut (3)	203638	203638	203638
21	Arm Bushings (2)	202826	202826	202826
33	Zinc Anode Kit	211421	211421	211421
<b>OLDER NON THREADED FULCRUM PIN PARTS</b>				
8B	Cover Support Assy Non-Threaded	203285	203285	203285
9	Cover Support	(210100)	(210100)	(210100)
10	Arm Hood	(204707)	(204707)	(204707)
11	Arm Spring	202699	202699	202699
-	Fulcrum Pin Repair Kit Non-Threaded	210068	210068	210068
7	Fulcrum Nut	(206384)	(206384)	(206384)
12B	Fulcrum Pin-NON THD'D	(202413)	(202413)	(202413)
22	Set Screw	209803	209803	209803
<b>TRIP MECHANISM (Included in Arm/Body Assembly # 6) (Specify nozzle size when ordering)</b>				
23	Upper Trip Assembly	200773	200773	200773
24	Lower Trip Assy (Post-6/94)	211186	211186	211186
25	Trip Spring	(B) (200521)	(B) (200521)	(B) (200521)
26	Spacer Washers (3)	(B) (200522)	(B) (200522)	(B) (200522)
27	E-Ring (2)	(B) 200975	(B) 200975	(B) 200975
28	Lower Trip Assy (Pre-6/94)	202848	202848	202848
29	Trip Lever (Pre-6/94)	202489	202489	202489
<b>NOZZLES (Included in Arm/Body Assembly # 6)</b>				
29	Drive Nozzle	206910	206910	206910
30	Range Nozzle Assy	204182	204182	204182
31	O-Ring	203316	203316	203316
32	Vane	202441	202441	202441
<b>BEARING ASSY (Sandboot Style)</b>				
34	Bearing Hood	(C) (204751)	(C) (204751)	(C) (204751)
35	Bearing Spring	(C) (205013)	(C) (205013)	(C) (205013)
-	Sandboot Kit	208468	208468	208468
36	Spring Support Washer	(C) (202436)	(C) (202436)	(C) (202436)
37	Teflon Top Seal Washer	(C) (203359)	(C) (203359)	(C) (203359)
38	Upper Brg Seal Washer	(C) (207534)	(C) (207534)	(C) (207534)
39	Bellows/Bearing Guide	(E)	(E)	(E)
40	Retract Spring	(208216)	(208216)	(208216)
41	Buna N Guide Seal	(C) (202430)	(C) (202430)	(C) (202430)
42	Friction Collars (2)	202429	202429	202429
43	Bearing Sleeve Assembly	203126	203126	203126
44	Brg Washer (Black) (2)	(C) (202438)	(C) (202438)	(C) (202438)
45	Wear Washer (Gold)	(C) (204733)	(C) (204733)	(C) (204733)
46	Upper Snap Ring	208395	208395	208395
47	Seal, bearing Guide (Red)	211239	211239	211239
48	Bearing Nipple	202928	202928	202928

- (A) Included in Fulcrum Repair Kit # 211022.
- (B) Included in Trip Spring & Washer Kit # 209361.
- (C) Included in Bearing Washer Kit # 204179.
- (D) Not saleable, included in assembly listed above.

Note: Part numbers enclosed in brackets ( ) are not available individually, but may be sold in assemblies or kits.