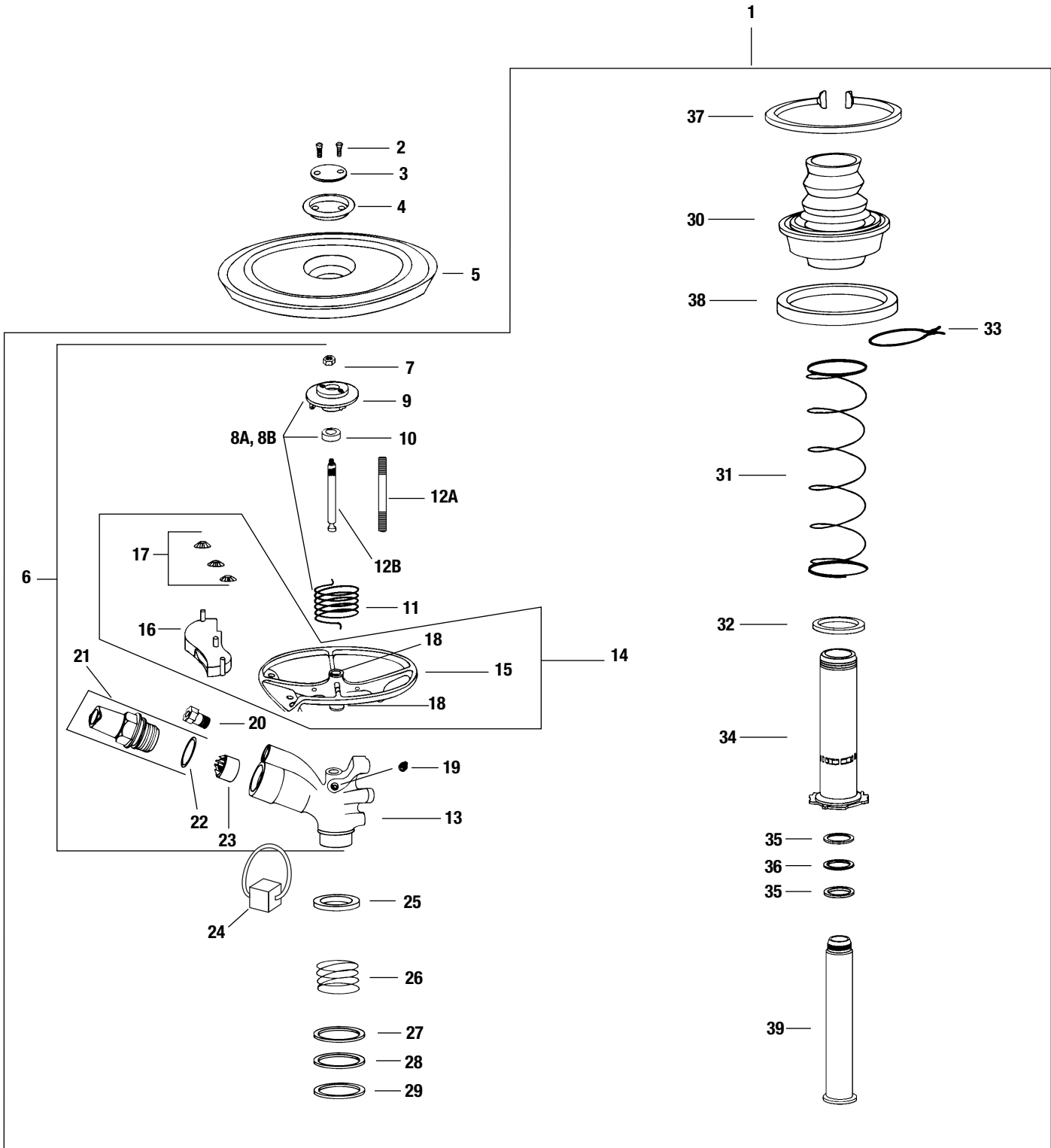


91DR / 91DS / 91DH INTERNAL ASSEMBLY



Ref. Part Description	91DR	91DS	91DH
1 INTERNAL ASSEMBLY (B)	208237-xx--15	208237-xx--15	208237-xx--15
COVER ASSEMBLIES			
2 Cover Screws, Standard	200974	200974	200974
3 Retainer, Steel	202685	202685	202685
4 Plastic Sand Cover	204749	204749	204749
5 Plastic Cover	208625	208625	208625
UPPER ASSEMBLY (New Threaded Fulcrum Pin Version)			
6 Arm/Body Assy	203339-30--15	203339-30-15	203339-30-15
- Body/Fulcrum Pin Assy	202686	202686	202686
7 Fulcrum Nut	(A) (206384)	(A) (206384)	(A) (206384)
8A Cover Support Assy Threaded	210428	210428	210428
9 Cover Support	(210100)	(210100)	(210100)
10 Arm Hood	(204707)	(204707)	(204707)
11 Arm Spring	202699	202699	202699
12A Fulcrum Pin - Threaded	(A) (210101)	(A) (210101)	(A) (210101)
13 Body	(210100)	(210100)	(210100)
14 Arm Assembly	203944	203944	203944
15 Arm	(207521)	(207521)	(207521)
16 PJ Tube Assembly	204723	204723	204723
17 Pushnut (3)	203638	203638	203638
18 Arm Bushings (2)	202826	202826	202826
24 Zinc Anode Kit	211421	211421	211421
OLDER NON THREADED FULCRUM PIN PARTS			
8B Cover Support Assy Non-Threaded	203285	203285	203285
9 Cover Support	(210100)	(210100)	(210100)
10 Arm Hood	(204707)	(204707)	(204707)
11 Arm Spring	202699	202699	202699
- Fulcrum Pin Repair Kit Non-Threaded	210068	210068	210068
7 Fulcrum Nut	(206384)	(206384)	(206384)
12B Fulcrum Pin-NON-THD'D	(202413)	(202413)	(202413)
19 Set Screw	209803	209803	209803
NOZZLES (Included in Arm/Body Assy # 6) (Specify nozzle size when ordering)			
20 Drive Nozzle	206081	206081	206081
21 Range Nozzle Assy	204182	204182	204182
22 O-Ring	203316	203316	203316
23 Vane	202441	202441	202441
BEARING ASSY (Sandboot Style)			
25 Bearing Hood	(B) (204751)	(B) (204751)	(B) (204751)
26 Bearing Spring	(B) (205013)	(B) (205013)	(B) (205013)
- Sandboot Kit	208468	208468	208468
27 Spring Support Washer	(B) (202436)	(B) (202436)	(B) (202436)
28 Teflon Top Seal Washer	(B) (203359)	(B) (203359)	(B) (203359)
29 Upper Brg Seal Washer	(B) (207534)	(B) (207534)	(B) (207534)
30 Bellows/Bearing Guide	(C)	(C)	(C)
31 Retract Spring	(208216)	(208216)	(208216)
32 Buna N Guide Seal	(B) (202430)	(B) (202430)	(B) (202430)
33 Friction Collar (1)	202429	202429	202429
34 Bearing Sleeve Assembly	203126	203126	203126
35 Brg Washer (Black) (2)	(B) (202438)	(B) (202438)	(B) (202438)
36 Wear Washer (Gold)	(B) (204733)	(B) (204733)	(B) (204733)
37 Upper Snap Ring	208395	208395	208395
38 Seal, Bearing Guide (Red)	211239	211239	211239
39 Bearing Nipple	202928	202928	202928

(A) Included in Fulcrum Repair Kit # 211022.

(B) Included in Bearing Washer Kit # 204179.

(C) Not saleable, included in assembly listed above.

Note: Part numbers enclosed in brackets () are not available individually, but may be sold in assemblies or kits.