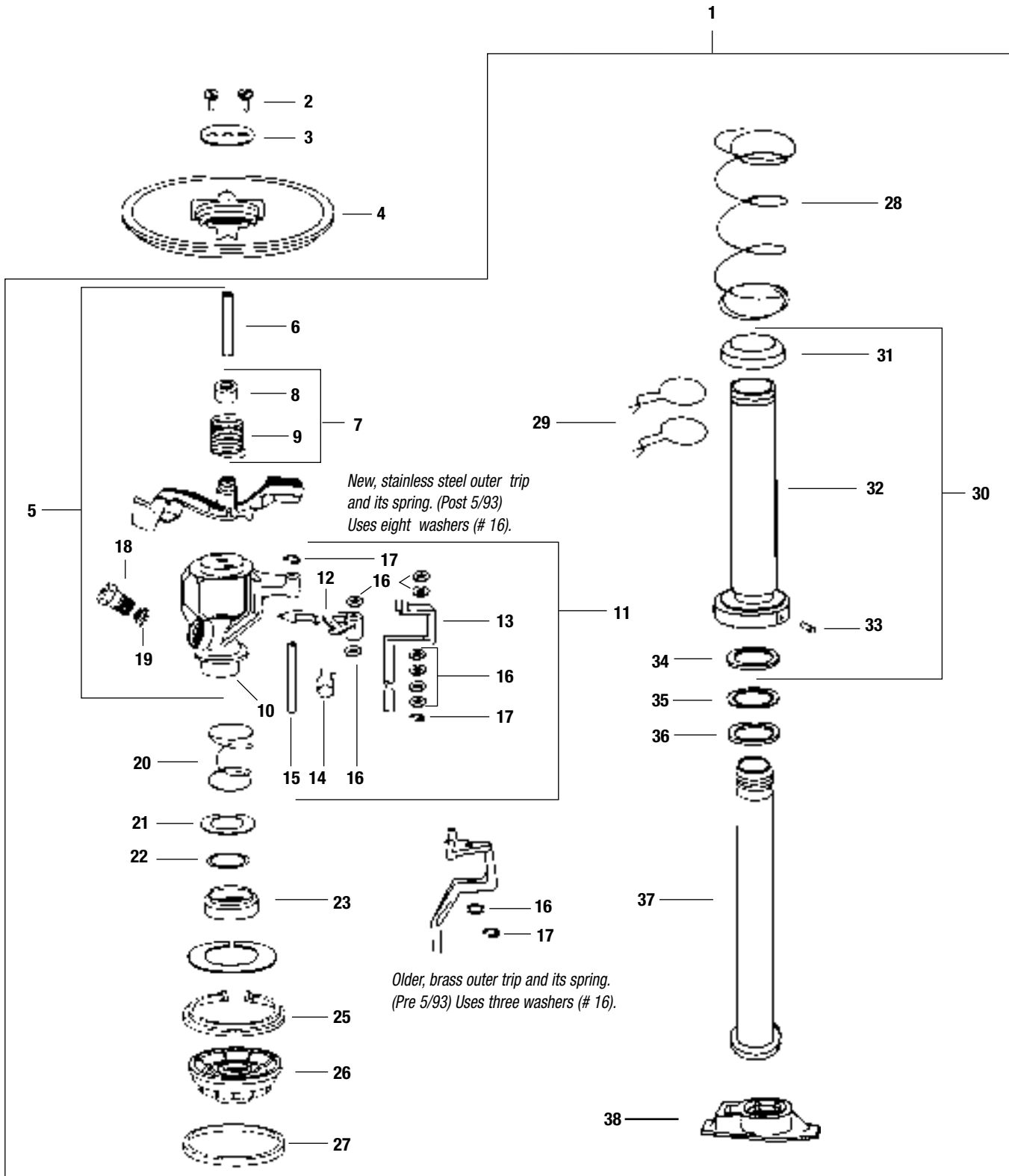


47DR / 47DS / 47DH INTERNAL ASSEMBLY



Ref.	Part Description	47DR	47DS	47DH
1	INTERNAL ASSEMBLY	204113-16	204113-16	204113-16
COVER ASSEMBLY				
2	Cover Screws, Standard (2)	200974	200974	200974
3	Retainer, Steel	200740	200740	200740
4	Plastic Cover	208227	208227	208227
UPPER ASSEMBLY				
5	Arm/Body Assembly (A)	200130-16	200130-16	200130-16
6	Fulcrum Pin	200076	200076	200076
7	Arm Spring Assembly	203725	203725	203725
8	Arm Hood	200924	200924	200924
9	Arm Spring	200089	200089	200089
10	Body	200092	200092	200092
TRIP MECHANISM (A)				
11	Trip Repair Kit	203719	203719	203719
12	Inner Trip	200060	200060	200060
13	Outer Trip	(210251)	(210251)	(210251)
14	Trip Spring	209363	209363	209363
15	Trip Shaft	201932	201932	201932
16	Spacer Washers (8)	201933	201933	201933
17	E-Ring (2)	200975	200975	200975
NOZZLES (Specify nozzle sizes when ordering)				
18	Range Nozzle Assembly	200079	200079	200079
19	Vane	202143	202143	202143
BEARING ASSEMBLY				
20	Bearing Spring	(C) (200029)	(C) (200029)	(C) (200029)
21	Steel Top Seal Washer	(C) (200030)	(C) (200030)	(C) (200030)
22	Teflon Top Seal Washer	(D) (200031)	(D) (200031)	(D) (200031)
23	Buna-N Guide Seal (Black)	(C) (200042)	(C) (200042)	(C) (200042)
25	Upper Snap Ring	208395	208395	208395
26	Bearing Guide, Plastic	207569	207569	207569
-	Bearing Guide Ring	207415	207415	207415
27	Seal, Bearing Guide (Red)	211239	211239	211239
28	Retract Spring	201113	201113	201113
29	Friction Collars (2)	200164	200164	200164
30	Bearing Sleeve Assembly	202068	202068	202068
31	Buna-N Lower Seal (Black)	(D) (200036)	(D) (200036)	(D) (200036)
32	Bearing Sleeve	(202049)	(202049)	(202049)
33	Bearing Sleeve Pin	200064	200064	200064
34	Wear Ring (Gold)	(D) (201608)	(D) (201608)	(D) (201608)
35	Teflon Speed Washer (White)	(D) (202169)	(D) (202169)	(D) (202169)
36	Buna-N Washer Seal (Gray)	(D) (201562)	(D) (201562)	(D) (201562)
37	Bearing Nipple	200037	200037	200037
38	Part Circle Adapter	203936	203936	203936

- (A) Arm/Body Assy includes range nozzle and trip mechanism.
- (B) 47 spring for brass outer trip (# 207750) is not included in current 47 trip kit. Order separately.
- (C) Included in Upper Bearing Spring Washer Kit # 203731.
- (D) Included in Bearing Washer Kit # 203732.

Note: Part numbers enclosed in brackets () are not available individually, but may be sold in assemblies or kits.