

DuraProducts Pumps & Meters

2" & 3" High-Flow Dura-Meter



Specifications		
Nominal Size	2"	3"
Connection	M220 Flange	M300 Flange
Model	Dura HFM 2	Dura HFM 3
Batteries	(2) 9 Volt	(2) 9 Volt
Accuracy	+ / - 0.5%	+ / - 0.5%
Backlit Display	Yes	Yes
GPM	15 - 300	15 - 700
Maximum Pressure	150 PSI	150 PSI
Wetted Materials	GF Polypropylene, Viton®, EPDM or Silicone seal, Sapphire	GF Polypropylene, Viton®, EPDM or Silicone seal, Sapphire

Ordering Info		
Nominal Size	2"	3"
Viton®	DP-HFM2V	DP-HFM3V
EPDM	DP-HFM2E	DP-HFM3E
Silicone	DP-HFM2S	DP-HFM3S

6000 Series High-Flow Dura-Pump



Specifications	
Vertical Suction Lift	Self-priming to 10ft, 3m
Power Cord	12 Volt: 18ft, 5.5m; 110 Volt: 6.5ft, 2m
Motor	1/4 HP, 240W
Amps	12 Volt: 20.0; 110 Volt: 3.0
Suction Port	2" Male and 1" Female NPT thread
Discharge Port	1" Female NPT thread
Wetted Materials	Polypropylene; Santoprene; Viton®, EPDM or Silicone seals; 304 Stainless Steel, PVDF (Kynar)

Ordering Info		
	12 Volt DURA-PUMP™	110 Volt DURA-PUMP™
Viton®	DP-6018V-12	DP-6018V-110
EPDM	DP-6018E-12	DP-6018E-110
Silicone	DP-6018S-12	DP-6018S-110

DuraProducts Pumps & Meters



Dura-Pump™ Easy Caddy

The Dura-Pump™ Easy Caddy can be mounted in 6 different configurations on a variety of tank/tote and drum types ... Use it mounted on top of tank or top of 55 gallon drum, on side of tank, or off the ground depending on user preference ... Conversion kits are available to mount system on Monsanto and Snyder type tanks.

DPEM-6318V-12



N-Serve Bottom Unload

Dura-Pump™ Bottom Unload pumping system in Viton® ... Features 2 Year Maintenance Program.

w/ meter DPBM-6318NV-12



Dura-Meter™

Meter made of impact resistant Lexan™ faceplate ... 100% moisture-sealed circuitry makes meter impervious to water intrusion ... Same great menu driven backlit display ... Plumbed both for in-line and 90 degree applications ... Features 2 Year Maintenance Program.

DP-3000V



Dura-ABS™ Auto-Batch System

Intuitive interface allows for the selection of manual or automatic operation with the flip of a switch ... High-flow pump with up to 15GPM flow rate ... Optimized for repeatable batching; returns to the last volume amount dispensed ... Includes Dura-Meter™ with impact resistant Lexan™ faceplate ... Features a 2 year warranty.

DPABS-6318V



Dura-ABS Auto-Batch System Direct Injection

The Dura Auto-Batch System DI (Automated Direct Injection) works by direct injecting herbicides into the carrier flow while filling the sprayer.

Lowest cost automated sprayer filling system ... Filling your sprayer has never been easier or faster ... Reduces operator error and herbicide exposure ... Provides recirculation, maximizing chemical performance ... Accurately dispenses repeatable batches ... Eliminates cross contamination.

Part No.	QTY	Description
DPABS-6318**	1-4	DURA-ABS Auto-Batch System
Dura-ABS DI 2" Kit	1-4 <i>1 per Dura ABS</i>	2" Accessory Kit
Dura-ABS DI 3" Kit	1-4	3" Accessory Kit
Dura-ABS DI 2" Gauge Kit	1	2" Gauge Kit
Dura-ABS DI 3" Gauge Kit	1	3" Gauge Kit
DP-P4040 DI	1	DI Frame

**Available in 12V or 110V with Viton®, EPDM, or Silicone Seals

DuraProducts Pumps

DURA-PUMP™ EASY CADDY

Tanks, Totes and Drums sold separately.



TOP MOUNT
Easy Caddy secured
on top of tote

SIDE MOUNT
Easy Caddy secured
on side of tote



GROUND
Easy Caddy used
from the ground



DRUM
Easily converted
to a 30/55-Gallon
Drum

1 SYSTEM USE IT 6 WAYS

- / The Easy Caddy can be mounted in six different configurations on a variety of tank/tote and drum types
- / Use it mounted on top of a tank or on top of a 30/55-Gallon Drum, on the side of tank, or off the ground depending on user preference
- / Conversion kits are available to mount a system on Monsanto or Snyder type tanks
- / Includes a 2-year Warranty & Maintenance Program



MONSANTO TANK
Easily converted to a MTS



SNYDER TANK
Easily converted
to a GEM Cap



ORDERING INFORMATION	
12 VOLT WITH METER	110 VOLT WITH METER
DPEM-6318V-12 Viton®	DPEM-6318V-110 Viton®
DPEM-6318E-12 EPDM	DPEM-6318E-110 EPDM
DPEM-6318S-12 Silicone	DPEM-6318S-110 Silicone
12 VOLT NO METER	110 VOLT NO METER
DPE-6018V-12 Viton®	DPE-6018V-110 Viton®
DPE-6018E-12 EPDM	DPE-6018E-110 EPDM
DPE-6018S-12 Silicone	DPE-6018S-110 Silicone

Always turn pump off and disconnect system from power when not in use.

PUMPING SYSTEM CONTAINS	
Pump	High-Flow Dura-Pump™
Suction Hose	1" x 5ft, 1.5m
Discharge Hose	1" x 12ft, 3.6m
Nozzle	Ball valve
Camlock	2"
Meter	Dura-Meter™ (optional)
Other	All hose clamps, barbs and nipples

DURA-ABS™ AUTO-BATCH SYSTEM

Tanks, Totes and Drums sold separately.

"The system **reduces** human error and creates valuable **efficiency** for us."

-Peterson Farms, KY



How It Works

- 1 Select the volume desired
- 2 Press START
- 3 The pump will begin to dispense fluid then automatically shut off upon completion

- / Intuitive interface allows for the selection of manual or automatic operation with the flip of a switch
- / High-flow pump with up to 18GPM/68LPM flow rate
- / Optimized for repeatable batching; returns to the last volume amount dispensed
- / 100% moisture-sealed circuitry
- / Includes Dura-Meter™ with impact resistant Lexan™ faceplate
- / Available in 12 Volt or 110 Volt, and Viton®, EPDM, or Silicone options
- / Measures in gallons, liters and ounces
- / Includes a 2-year Warranty & Maintenance Program



"I've got six plumbed to an inductor. It **works** great, and **saves** me time when mixing batches."

-Don, Nutrien Ag Solutions



ORDERING INFORMATION

12 VOLT	110 VOLT
DPABS-6318V-12 Viton®	DPABS-6318V-110 Viton®
DPABS-6318E-12 EPDM	DPABS-6318E-110 EPDM
DPABS-6318S-12 Silicone	DPABS-6318S-110 Silicone

Always turn pump off and disconnect system from power when not in use.

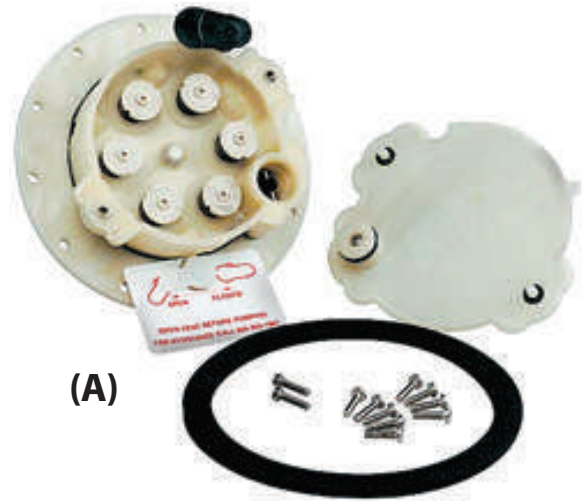
DD-6 12-Volt Closed-System Pump

The DD-6 offers convenient, closed-system pumping with Rinse/Drain/Circulate features. Unique pump unit mounts permanently in container making closed-system transfer possible.

Rinse/Drain/Circulate features allow rinsing of the container with the pump, draining the discharge lines, and circulating the tank's contents to remix separated or settled products, all without ever removing the pump or opening the container.

Handles the toughest "hard-to-pump" herbicide or the lightest, liquid agri-chemicals. Plastic pump construction provides excellent chemical and corrosion resistance. Separate pump and motor feature for easy maintenance. Chosen by leading agri-chemical manufacturer.

Elbow Discharge Kits and DIP tubes are sold separately.



Part No.	Description
SCNKD-23-01	Threaded Elbow Kit Female
SCNKD-23-AC	Aluminum Elbow Kit with Male Coupler Adapter
SCNEP-80	Black Battery Clamp
SCNEP80R	Red Battery Clamp
SCNDD6P	Pump Only (A)
SCNDD6M	Motor Only (B)
SCNXTUBE-TV	Dip Tube
SCNEP-13ASSY	Switch Assembly Only



AP-30 Anodized Air Pump

The AP-30 is Scienco's Multi-purpose pump for high capacity, low-maintenance performance. Continuous duty pumping for many agri-chemicals, fuels, water. Minimum moving parts for maximum durability. Now anodized for improved corrosion protection. Up to 30 GPM capacity. Versatile power sources: vehicle air compressor system, portable AC or DC air compressor, or CO₂ cylinder.

Part No.
SCNAP-30

PH-6 Panther Pump

RR-SCNPHP-Kit-01

The PH-6 Diaphragm Pump is a non-UL rated polypropylene/nylon transfer pump for low and high viscosity liquids. Pump is not to be used with flammable liquids. It is powered by a 12-volt electric motor with a 30-minute duty cycle. Flow rate is 8-10 GPM @ 60-degrees. This configuration includes 1" discharge and combined 2"/1" suction ports.

Caddy unit available for maximum flexibility, portability, and ease in handling.

Part No.	Description
SCNPH6-PUMP	Pump
SCNPHP-Kit-02	O-Ring & Flat Gasket
SCNCADDY-PH6-02	Pump/Caddy - No Meter



Scienco Electronic Flow Meters



Part No.	Description
SCNSEM-100	Electric Flow Meter
SCNSEM-100 KIT - 1	Face Plate

SEM-100

Scienco SEM-100 and SEM-100FT electronic flow meters employ positive displacement nutating disk technology to meter liquids of various viscosities with great accuracy and nominal pressure loss. With the largest LCD display available on the market, positive touch buttons and simple one-touch operation, the SEM-100 and SEM-100FT flow meters are easy to read and to use.

- Flows from 0.5 to 6.8 m³/h (2 to 30 gpm)
- Temperatures to 55°C (130°F)
- Pressures to 4 bar (60 psi)
- Accuracy to +/- 0.5%
- Totals to 999,999



SEM-100FT

The flow-through configuration of the SEM-100FT enables the meter to be mounted at the hose end.

Part No.
SCNSEM-100FT



SEM-100SS

The SEM-100SS has a stainless steel electric body as opposed to a nylon electronic body.

Part No.
SCNSEM-100SS

John Blue Centrifugal Pumps



PSP-3240

PATENT-PENDING 2" SELF-PRIMING POLY-CENTRIFUGAL PUMPS

200 GPM Max Flow	Vac-U-Seal Impeller
45 PSI Max Pressure	Close-coupled Shaft
112 GPM @ 25 PSI	Fits 3/4" Diameter Shaft
Max Speed 3600	Double Wet Seal Assembly
Required Horsepower: 5 HP	Chemical Resistant Materials
2" Inlet & Outlet FPT	1" FPT pressure access & 1/2" FPT drain port



PSP-3340-BSFLG

PATENT-PENDING 3" SELF-PRIMING POLY-CENTRIFUGAL PUMPS

375 GPM Max Flow	Vac-U-Seal Impeller
45 PSI Max Pressure	Close-coupled Shaft
Max Speed 3600	Fits 1" and 1-1/8" Diameter Shafts
Required Horsepower: 10 HP	Double Wet Seal Assembly
3" Inlet & Outlet FPT	Chemical Resistant Materials
	1" FPT pressure access & 1/2" FPT drain port

PRODUCT FEATURES

- Fully-assembled from the factory—ready to be attached to power source immediately.
- Double Wet Seal Assembly—pump can be run dry without causing seal failure. The seal is antifreeze cooled. (Antifreeze is pre-filled from the factory.)
- Closed Impeller Technology—pump efficiency improves over time as the impeller wears.
- Polypropylene Body, FKM and Viton® Seals, 316SS Impeller Shaft for excellent chemical resistance.
- Pump can be removed, or engine can be replaced without having to disassemble the pump.



GPI Herbicide & Chemical Pumps

P-120h and P-200h - 12 Volt

Part No.	Description
118000-1	Model P-120H
118000-2	Model P-200H
118503-1	Overhaul Kit - P120H
118504-1	Overhaul Kit - P200H



Tote-A-Pump System

Part No.	Description
118602-10	8 GPM Chemical Transfer Pump System



PA-200H – 115 Volt Pump

Part No.	Description
118003-2	115 Volt Pump with 2" NPT Union Ring Tank Mount
118003-4	115 Volt Pump with 4" Spin Collar Mount



FM-300H Electronic Meter

Part No.	Description
120000-1	Model FM-300H
120500-1	Overhaul Kit

FM-100H Mechanical Meter

Part No.	Description
111200-7	Model FM-100H
111507-1	Overhaul Kit



TM-200 2" PVC Water Meter

Part No.	Description
TM200-N	2" PVC Water Meter - NPT Thread



Nylon Turbine Meter

Part No.	Description
113900-9511	03N31GM Meter
113520-1	Battery Kit

HP-100C HAND PUMP

Part No.	Description
114000-11	Model HP-100C-2TC



LP-50H LEVER PUMP

Part No.	Description
129001-1	Lever Pump



GPI Herbicide Accessories

CHEMICAL NOZZLE WITH TRIGGER HANDLE

Capacity to 40 GPM - 75 PSI Maximum Pressure

- Glass filled Polypropylene resists corrosion.
- Stainless handle, spring and pin
- Teflon® pin bushing
- Viton® rubber parts
- Padlock capability
- 1" FPT Inlet



Part No.	Description
VN100	Poly Nozzle Valve
VN10200	Repair Kit

CHEMICAL NOZZLE WITH POLY VALVE

Hose end Nozzle Valve for use with Herbicide transfer pumps. Incorporates the "Single Union Poly Ball Valve". Polypropylene material is resistant to most chemicals and fertilizers. 45 degree spout assembly will fit & stay put in any tank opening. Has Full Flow Ball with 1" FPT Inlet.



Part No.	Description	Pipe Size	Ball Opening
UVA100FP	Single Union Poly Valve With Angle Hose End	1"	1"
V10161	Replacement Nozzle	1"	-

EPDM CHEMICAL RESISTANT HOSE ASSEMBLY

1" X 15' Hose Assembly with factory installed 1" NPT steel ends.

EPDM tube construction reinforced with spiral polyester yarn. Black EPDM cover.



Part No.	Description
SCNEP58	1" x 15' EPDM Hose Assembly

PLASTIC ADJUSTABLE SUCTION PIPE ASSEMBLY

(22" - 40") Adjusts for tank sizes from 22" - 40" depths.

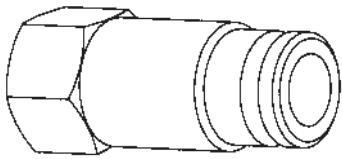
15" extension kit available for larger tank depths.

Part No.	Description
110100-2	22" to 40" Adj. Pipe

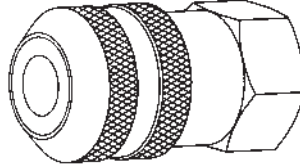


Dry Break Couplings - Poly & Stainless Steel

DRY BREAK STAINLESS-STEEL CHEMICAL TRANSFER COUPLING 1/2" SIZE

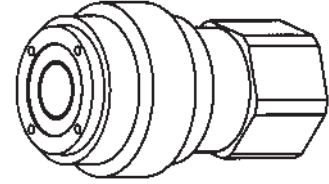


Part No.	Description
FS502-8FP	316 SS Nipple 1/2" 14 NPSF



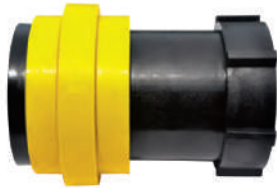
Part No.	Description
FS501-8FP	316 SS Coupler 1/2" 14 NPSF

DRY BREAK PLASTIC FLUSH FACE CHEMICAL TRANSFER COUPLING 1/2" SIZE



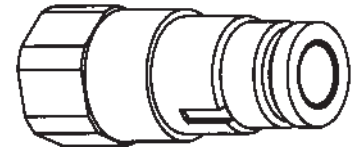
Part No.	Description
PF501-8FP	Coupler 1/2" NPT

DRY BREAK PLASTIC FLUSH FACE CHEMICAL TRANSFER COUPLING 1" SIZE



Part No.	Description
QD100F	Coupler 1" NPT

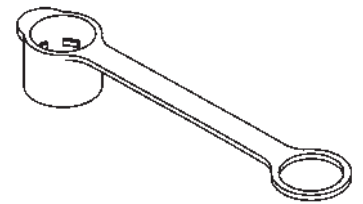
Part No.	Description
PF502-8FP	Nipple 1/2" NPT



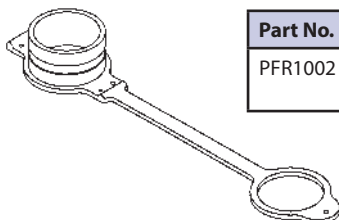
Part No.	Description
QD100M	Male Nipple w/ 2" buttress



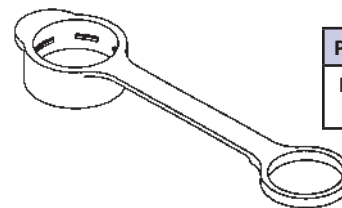
Part No.	Description
QD100NPS	Male Nipple 2" NPT



Part No.	Description
PFR502	Molded dust cap-PF & FS Series 1/2"



Part No.	Description
PFR1002	Molded dust cap PF Series 1"



Part No.	Description
PFR501	Molded dust plug PF & FS Series 1/2"

Liquid Accessories

TANK MIXING EDUCTOR

Pumps four gallons of suction liquid for each gallon of motive liquid.



Part No.
PTE201701

BUTTERFLY VALVE

Materials

Body: Cast Iron
 Disc & Stem: 316 Stainless Steel
 Resilient Seat: EPDM
 Stem Bushing: Acetal
 Disc Screw: 316 Stainless Steel
 O-Ring & Stem Packing: Buna N



Part No.	Size
S115050	2" Valve
S115052	3" Valve
S115054	4" Valve
DE45187	3" Seat
DE45276	4" Seat

COMPANION FLANGE



Part No.	Size
DE45059	2"
DE45178HD	3"
DE45180	4"
DE45059SS	2"
DE45178SS	3"
DE45180SS	4"

THRALL STAINLESS STEEL BALL VALVE

- All Full Port Design
- Blowout Proof Stem
- Valves Rated at 1,000 PSI
- Teflon Seals and Seats
- Latch Locking Handle



Part No.	Size
TD025	1/4"
TD038	3/8"
TD050	1/2"
TD075	3/4"
TD100	1"
TD125	1 1/4"
TD150	1 1/2"
TD200	2"
TD300	3"

APOLLO BALL VALVE

- Carbon Steel Body
- 1/4 Turn-On – 1/4 Turn-Off
- 1/4" - 1" Rated at 2000 PSI
- 1 1/2" - 2" Rated at 1500 PSI



Part No.	Size
DE45102	1/4"
DE45103	3/8"
DE45104	1/2"
DE45105	3/4"
DE45106	1"
DE45645	1 1/4"
DE45108	2"

PRESSURE VACUUM VENT FOR AG-CHEMICAL

Model 748ALT
 2" mpt

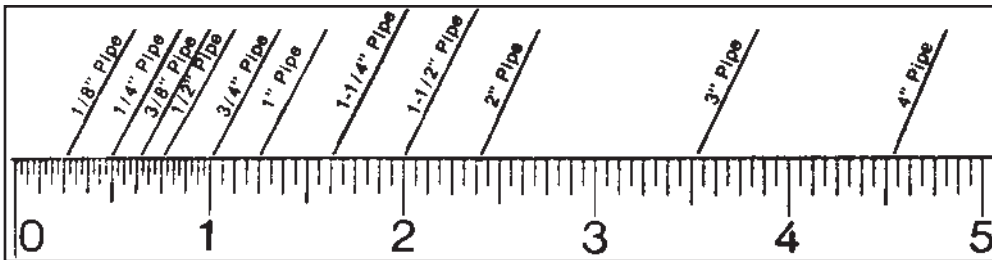


Part No.
PTE110880

Rectorseal &
 Teflon Tape
 p. 185

Schedule 40 Standard Black Iron Fittings

A common error made when sizing threaded fittings occurs whenever a ruler or tape measure is used. Pipe sizes must be measured by a pipe size scale – see illustration below.



Rectorseal &
Teflon Tape
p. 185



Reducer Bushing	
Part No.	Size
BIRB025-018	1/4" x 1/8"
BIRB050-038	1/2" x 3/8"
BIRB075-050	3/4" x 1/2"
BIRB100-075	1" x 3/4"
BIRB125-075	1 1/4" x 3/4"
BIRB125-100	1 1/4" x 1"
BIRB150-125	1 1/2" x 1 1/4"
BIRB200-150	2" x 1 1/2"
BIRB300-200	3" x 2"
BIRB400-300	4" x 3"

Couplings Blk.	
Part No.	Size
BICPLG018	1/8"
BICPLG025	1/4"
BICPLG038	3/8"
BICPLG050	1/2"
BICPLG075	3/4"
BICPLG100	1"
BICPLG125	1 1/4"
BICPLG150	1 1/2"
BICPLG200	2"
BICPLG300	3"

Bell Reducer	
Part No.	Size
BIRC025-018	1/4" x 1/8"
BIRC038-025	3/8" x 1/4"
BIRC050-025	1/2" x 1/4"
BIRC075-050	3/4" x 1/2"
BIRC100-075	1" x 3/4"
BIRC125-100	1 1/4" x 1"
BIRC150-125	1 1/2" x 1 1/4"
BIRC200-150	2" x 1 1/2"
BIRC300-200	3" x 2"
BIRC400-300	4" x 3"

Plugs Blk.	
Part No.	Size
BIPLUG018	1/8"
BIPLUG025	1/4"
BIPLUG038	3/8"
BIPLUG050	1/2"
BIPLUG075	3/4"
BIPLUG100	1"
BIPLUG125	1 1/4"
BIPLUG150	1 1/2"
BIPLUG200	2"
BIPLUG300	3"
BIPLUG400	4"



King Nipples	
Part No.	King Nipples Steel
BIHB050	1/2" Nipple
BIHB075	3/4" Nipple
BIHB100	1" Nipple
BIHB125	1 1/4" Nipple
BIHB150	1 1/2" Nipple
BIHB200	2" Nipple
BIHB300	3" Nipple
BIHB400	4" Nipple

Caps Blk.	
Part No.	Size
BICAP018	1/8"
BICAP025	1/4"
BICAP038	3/8"
BICAP050	1/2"
BICAP075	3/4"
BICAP100	1"
BICAP125	1 1/4"
BICAP150	1 1/2"
BICAP200	2"
BICAP300	3"
BICAP400	4"

Crosses Blk.	
Part No.	Size
BICR038	3/8"
BICR050	1/2"
BICR075	3/4"
BICR100	1"
BICR125	1 1/4"
BICR150	1 1/2"
BICR200	2"
BICR300	3"
BICR400	4"

Union	
Part No.	Size
BIUN038	3/8"
BIUN050	1/2"
BIUN075	3/4"
BIUN100	1"
BIUN125	1 1/4"
BIUN150	1 1/2"
BIUN200	2"
BIUN300	3"

Schedule 40 Standard Black Iron Fittings

NIPPLES

Schedule 40 Black Iron – Standard

Part No.	Size
BINIP018-CN	1/8" x Close
BINIP018-2	1/8" x 2
BINIP018-3	1/8" x 3
BINIP018-4	1/8" x 4
BINIP018-5	1/8" x 5
BINIP018-6	1/8" x 6
BINIP025-CN	1/4" x Close
BINIP025-2	1/4" x 2
BINIP025-3	1/4" x 3
BINIP025-4	1/4" x 4
BINIP025-5	1/4" x 5
BINIP025-6	1/4" x 6
BINIP038-CN	3/8" x Close
BINIP038-2	3/8" x 2
BINIP038-3	3/8" x 3
BINIP038-4	3/8" x 4
BINIP038-5	3/8" x 5
BINIP038-6	3/8" x 6
BINIP050-CN	1/2" x Close
BINIP050-2	1/2" x 2
BINIP050-3	1/2" x 3
BINIP050-4	1/2" x 4
BINIP050-5	1/2" x 5
BINIP050-6	1/2" x 6
BINIP075-CN	3/4" x Close
BINIP075-2	3/4" x 2
BINIP075-3	3/4" x 3
BINIP075-4	3/4" x 4
BINIP075-5	3/4" x 5
BINIP075-6	3/4" x 6



PART NO.	SIZE
BINIP100-CN	1" x Close
BINIP100-2	1" x 2
BINIP100-3	1" x 3
BINIP100-4	1" x 4
BINIP100-5	1" x 5
BINIP100-6	1" x 6
BINIP125-CN	1 1/4" x Close
BINIP125-2	1 1/4" x 2
BINIP125-3	1 1/4" x 3
BINIP125-4	1 1/4" x 4
BINIP125-5	1 1/4" x 5
BINIP125-6	1 1/4" x 6
BINIP150-CN	1 1/2" x Close
BINIP150-2	1 1/2" x 2
BINIP150-3	1 1/2" x 3
BINIP150-4	1 1/2" x 4
BINIP150-5	1 1/2" x 5
BINIP150-6	1 1/2" x 6
BINIP200-CN	2" x Close
BINIP200-3	2" x 3
BINIP200-4	2" x 4
BINIP200-5	2" x 5
BINIP200-6	2" x 6
BINIP300-CN	3" x Close
BINIP300-4	3" x 4
BINIP300-6	3" x 6
BINIP400-CN	4" x Close
BINIP400-6	4" x 6

Black Pipe - Per Foot Schedule 40

Part No.	Black Pipe Per Foot - 21' Lengths
BI038	3/8" Schedule 40 Black Pipe Per Foot
BI050	1/2" Schedule 40 Black Pipe Per Foot
BI075	3/4" Schedule 40 Black Pipe Per Foot
BI100	1" Schedule 40 Black Pipe Per Foot
BI125	1 1/4" Schedule 40 Black Pipe Per Foot
BI150	1 1/2" Schedule 40 Black Pipe Per Foot
BI200	2" Schedule 40 Black Pipe Per Foot
BI300	3" Schedule 40 Black Pipe Per Foot
BI400	4" Schedule 40 Black Pipe Per Foot

90 Elbows Blk.

Part No.	Size
BIEL018-90	1/8"
BIEL025-90	1/4"
BIEL038-90	3/8"
BIEL050-90	1/2"
BIEL075-90	3/4"
BIEL100-90	1"
BIEL125-90	1 1/4"
BIEL150-90	1 1/2"
BIEL200-90	2"
BIEL300-90	3"
BIEL400-90	4"

45 Elbows Blk.

Part No.	Size
BIEL018-45	1/8"
BIEL025-45	1/4"
BIEL038-45	3/8"
BIEL050-45	1/2"
BIEL075-45	3/4"
BIEL100-45	1"
BIEL125-45	1 1/4"
BIEL150-45	1 1/2"
BIEL200-45	2"
BIEL300-45	3"
BIEL400-45	4"



90 Street Elbows Blk.

Part No.	Size
BISL018-90	1/8"
BISL025-90	1/4"
BISL038-90	3/8"
BISL050-90	1/2"
BISL075-90	3/4"
BISL100-90	1"
BISL125-90	1 1/4"
BISL150-90	1 1/2"
BISL200-90	2"
BISL300-90	3"
BISL400-90	4"

Tees Blk.

Part No.	Size
BITEE018	1/8"
BITEE025	1/4"
BITEE038	3/8"
BITEE050	1/2"
BITEE075	3/4"
BITEE100	1"
BITEE125	1 1/4"
BITEE150	1 1/2"
BITEE200	2"
BITEE300	3"
BITEE400	4"



Rectorseal &
Teflon Tape
p. 185

Stainless-Steel Fittings



90 Elbow

Part No.	Size
STSEL018-90	1/8"
STSEL025-90	1/4"
STSEL038-90	3/8"
STSEL050-90	1/2"
STSEL075-90	3/4"
STSEL100-90	1"
STSEL125-90	1 1/4"
STSEL150-90	1 1/2"
STSEL200-90	2"
STSEL300-90	3"
STSEL400-90	4"



45 Elbow

Part No.	Size
STSEL018-45	1/8"
STSEL025-45	1/4"
STSEL038-45	3/8"
STSEL050-45	1/2"
STSEL075-45	3/4"
STSEL100-45	1"
STSEL125-45	1 1/4"
STSEL150-45	1 1/2"
STSEL200-45	2"
STSEL300-45	3"
STSEL400-45	4"



Tee

Part No.	Size
STSTEE018	1/8"
STSTEE025	1/4"
STSTEE038	3/8"
STSTEE050	1/2"
STSTEE075	3/4"
STSTEE100	1"
STSTEE125	1 1/4"
STSTEE150	1 1/2"
STSTEE200	2"
STSTEE300	3"
STSTEE400	4"



Coupling

Part No.	Size
STSCPLG018	1/8"
STSCPLG025	1/4"
STSCPLG038	3/8"
STSCPLG050	1/2"
STSCPLG075	3/4"
STSCPLG100	1"
STSCPLG125	1 1/4"
STSCPLG150	1 1/2"
STSCPLG200	2"
STSCPLG300	3"
STSCPLG400	4"



Male/Female Reducer Bushing (Hex)

Part No.	Size
STSRB025-018	1/4" x 1/8"
STSRB038-025	3/8" x 1/4"
STSRB050-025	1/2" x 1/4"
STSRB050-038	1/2" x 3/8"
STSRB075-025	3/4" x 1/4"
STSRB075-050	3/4" x 1/2"
STSRB100-050	1" x 1/2"
STSRB100-075	1" x 3/4"
STSRB125-100	1 1/4" x 1"
STSRB150-075	1 1/2" x 3/4"
STSRB150-100	1 1/2" x 1"
STSRB150-125	1 1/2" x 1 1/4"
STSRB200-150	2" x 1 1/2"
STSRB300-200	3" x 2"
STSRB400-300	4" x 3"



Reducer Bell

Part No.	Size
STSRC025-018	1/4" x 1/8"
STSRC038-018	3/8" x 1/8"
STSRC038-025	3/8" x 1/4"
STSRC050-025	1/2" x 1/4"
STSRC050-038	1/2" x 3/8"
STSRC075-038	3/4" x 3/8"
STSRC075-050	3/4" x 1/2"
STSRC100-050	1" x 1/2"
STSRC100-075	1" x 3/4"
STSRC125-075	1 1/4" x 3/4"
STSRC150-100	1 1/2" x 1"
STSRC200-100	2" x 1"



Cap

Part No.	Size
STSCAP018	1/8"
STSCAP025	1/4"
STSCAP038	3/8"
STSCAP050	1/2"
STSCAP075	3/4"
STSCAP100	1"
STSCAP125	1 1/4"
STSCAP150	1 1/2"
STSCAP200	2"
STSCAP300	3"
STSCAP400	4"



Square Plug

Part No.	Size
STSPUG018	1/8"
STSPUG025	1/4"
STSPUG038	3/8"
STSPUG050	1/2"
STSPUG075	3/4"
STSPUG100	1"
STSPUG125	1 1/4"
STSPUG150	1 1/2"
STSPUG200	2"
STSPUG300	3"
STSPUG400	4"

90 Street Elbow

Part No.	Size
STSSL018-90	1/8"
STSSL025-90	1/4"
STSSL038-90	3/8"
STSSL050-90	1/2"
STSSL075-90	3/4"
STSSL100-90	1"
STSSL125-90	1 1/4"
STSSL150-90	1 1/2"
STSSL200-90	2"
STSSL300-90	3"



Union

Part No.	Size
STSun018	1/8"
STSun025	1/4"
STSun038	3/8"
STSun050	1/2"
STSun075	3/4"
STSun100	1"
STSun125	1 1/4"
STSun150	1 1/2"
STSun200	2"



Cross

Part No.	Size
STSCR038	3/8"
STSCR050	1/2"
STSCR075	3/4"
STSCR100	1"
STSCR125	1 1/4"
STSCR150	1 1/2"
STSCR200	2"
STSCR300	3"



Rectorseal &
Teflon Tape
p. 185

Stainless-Steel Nipples & Hose Barbs

Part No.	N.P.T.	Length
STSNIP018-CN	1/8"	close
STSNIP018-2	1/8"	2"
STSNIP018-3	1/8"	3"
STSNIP018-4	1/8"	4"
STSNIP018-5	1/8"	5"
STSNIP018-6	1/8"	6"
STSNIP025-CN	1/4"	close
STSNIP025-2	1/4"	2"
STSNIP025-3	1/4"	3"
STSNIP025-4	1/4"	4"
STSNIP025-5	1/4"	5"
STSNIP025-6	1/4"	6"
STSNIP038-CN	3/8"	close
STSNIP038-2	3/8"	2"
STSNIP038-3	3/8"	3"
STSNIP038-4	3/8"	4"
STSNIP038-5	3/8"	5"
STSNIP038-6	3/8"	6"
STSNIP050-CN	1/2"	close
STSNIP050-2	1/2"	2"
STSNIP050-3	1/2"	3"
STSNIP050-4	1/2"	4"
STSNIP050-5	1/2"	5"
STSNIP050-6	1/2"	6"
STSNIP075-CN	3/4"	close
STSNIP075-2	3/4"	2"
STSNIP075-3	3/4"	3"
STSNIP075-4	3/4"	4"
STSNIP075-5	3/4"	5"
STSNIP075-6	3/4"	6"
STSNIP100-CN	1"	close
STSNIP100-2	1"	2"
STSNIP100-3	1"	3"
STSNIP100-4	1"	4"
STSNIP100-5	1"	5"
STSNIP100-6	1"	6"

STSNIP125-CN	1 1/4"	close
STSNIP125-2	1 1/4"	2"
STSNIP125-3	1 1/4"	3"
STSNIP125-4	1 1/4"	4"
STSNIP125-5	1 1/4"	5"
STSNIP125-6	1 1/4"	6"
STSNIP150-CN	1 1/2"	close
STSNIP150-3	1 1/2"	3"
STSNIP150-4	1 1/2"	4"
STSNIP150-5	1 1/2"	5"
STSNIP150-6	1 1/2"	6"
STSNIP200-CN	2"	close
STSNIP200-3	2"	3"
STSNIP200-4	2"	4"
STSNIP200-5	2"	5"
STSNIP200-6	2"	6"
STSNIP300-CN	3"	close
STSNIP300-4	3"	4"
STSNIP300-6	3"	6"
STSNIP400-CN	4"	close
STSNIP400-6	4"	6"

Rectorseal &
Teflon Tape
p. 185



316 STAINLESS-STEEL HOSE BARBS

PPHB038SS



FEATURES
316 S.S. precision
castings.
Hex flats.

Stainless Steel Hose Barbs	
Part No.	Description
HB025SS	1/4" Male Thread x 1/4" Hose Shank
PPHB025/038SS	1/4" Male Thread x 3/8" Hose Shank
PPHB025/050SS	1/4" Male Thread x 1/2" Hose Shank
HB038SS	3/8" Male Thread x 3/8" Hose Shank
HB038-050SS	3/8" Male Thread x 1/2" Hose Shank
PPHB050SS	1/2" Male Thread x 1/2" Hose Shank
HB050-058SS	1/2" Male Thread x 5/8" Hose Shank
HB050-075SS	1/2" Male Thread x 3/4" Hose Shank
HB075-050SS	3/4" Male Thread x 1/2" Hose Shank
PPHB075SS	3/4" Male Thread x 3/4" Hose Shank
PPHB075/100SS	3/4" Male Thread x 1" Hose Shank
HB100-075SS	1" Male Thread x 3/4" Hose Shank
PPHB100SS	1" Male Thread x 1" Hose Shank
PPHB125SS	1 1/4" Male Thread x 1 1/4" Hose Shank
PPHB150SS	1 1/2" Male Thread x 1 1/2" Hose Shank
PPHB200SS	2" Male Thread x 2" Hose Shank
PPHB300SS	3" Male Thread x 3" Hose Shank